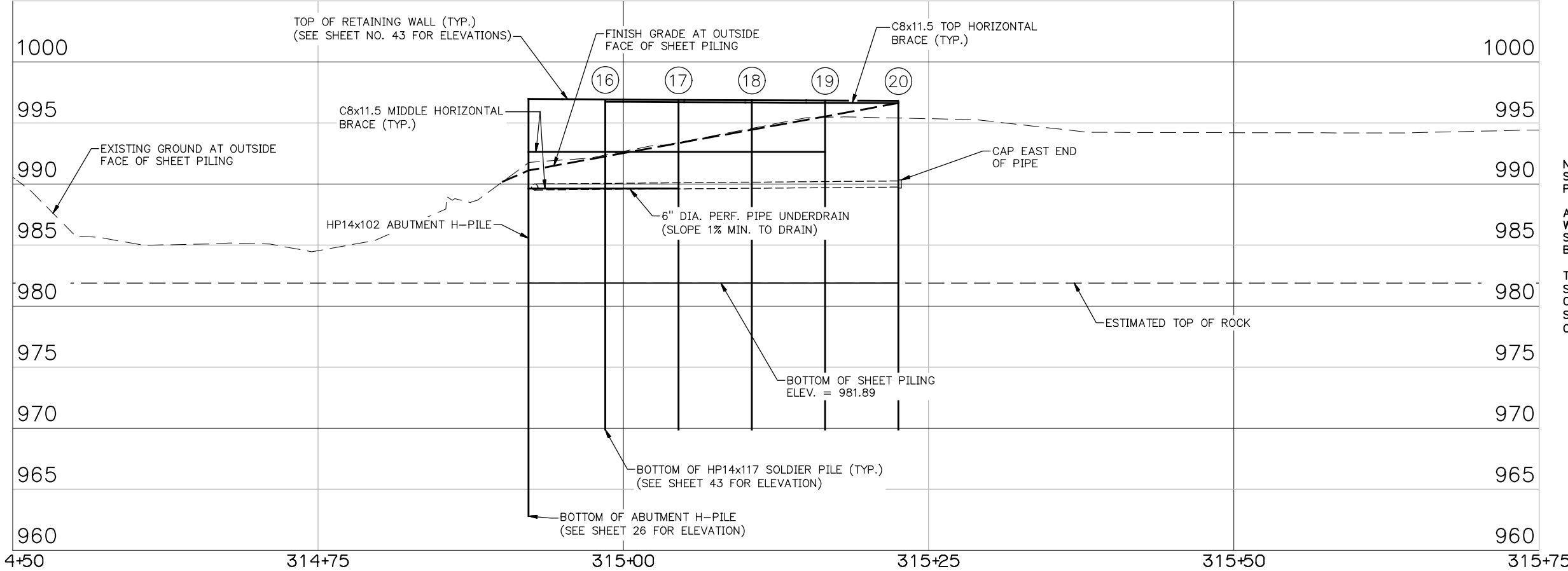


PLAN
SCALE 1" = 20'



ELEVATION (INSIDE FACE) — RETAINING WALL
(STATIONING MEASURED ALONG INSIDE FACE)
SCALE HORIZ. 1" = 20'
SCALE VERT. 1" = 20'

BM#103—3/4" IRON BAR
STA. 315+94.13 42.77' RT.
ELEV. = 997.97

BM#102—3/4" IRON BAR
STA. 313+78.23 46.33' LT.
ELEV. = 997.22

NOTES:
SEE SHEET 43 FOR SOLDIER PILE ELEVATIONS AND SHEET PILE ELEVATIONS AND LENGTHS.

ASPHALT SHOULDER WIDENING SHALL BE IN ACCORDANCE WITH THE ROADWAY PLANS AND DETAILS SHOWN ON THIS SHEET. ALL COSTS OF ASPHALT SHOULDER WIDENING SHALL BE INCLUDED IN THE ROADWAY PAY ITEMS.

THE 6" CONCRETE CURBS SHALL BE CONSTRUCTED AS SHOWN ON THIS SHEET. ALL COSTS TO CONSTRUCT THE 6" CONCRETE CURBS INCLUDING CONCRETE AND REINFORCING STEEL SHALL BE INCLUDED IN THE PRICE BID FOR "CLASS C CONCRETE".

GENERAL PLAN AND ELEVATION
(RETAINING WALL "C")